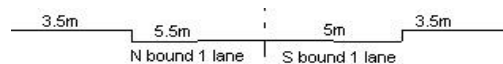
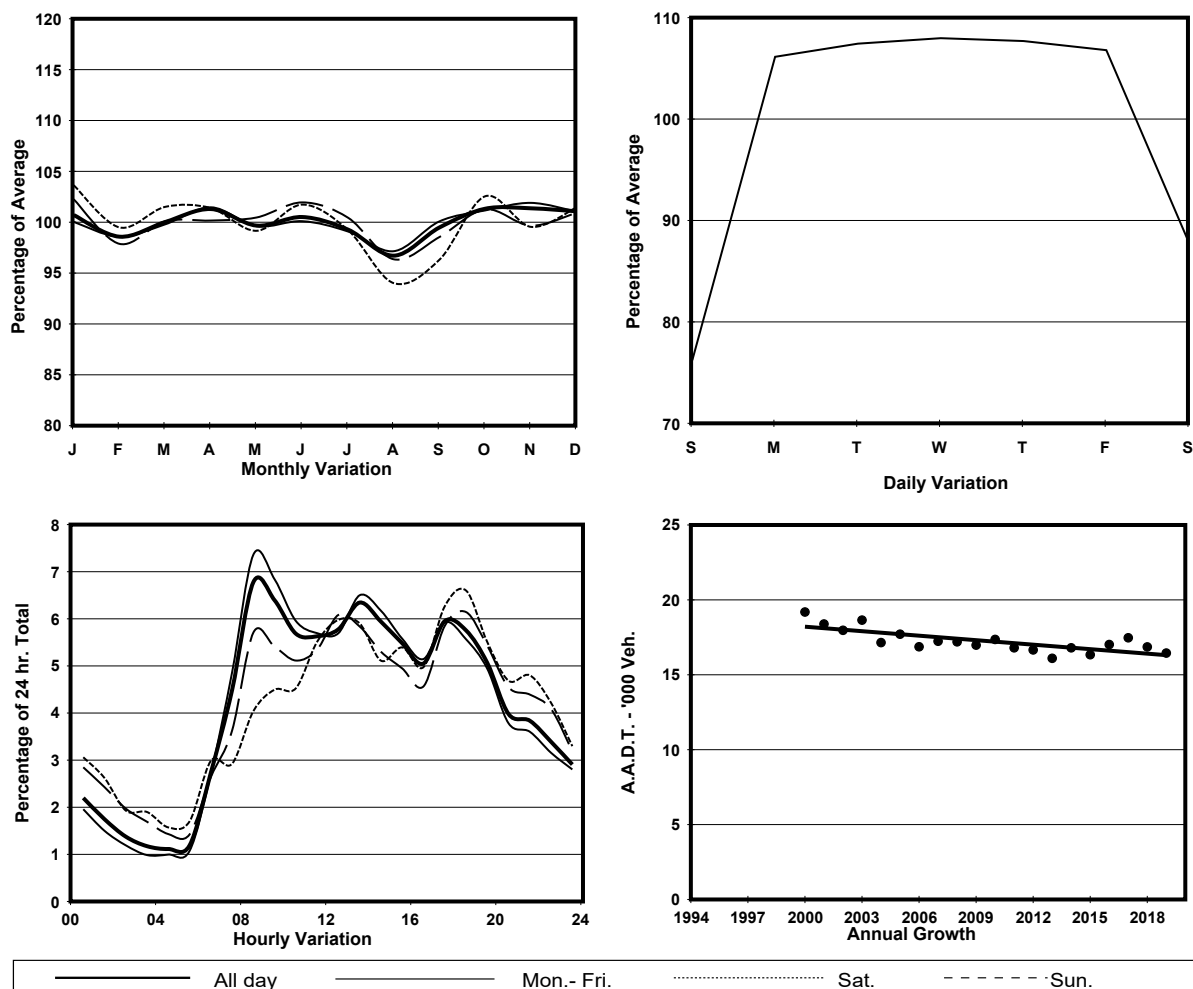


YEAR 2019
 COVERAGE (B) STATION 6204
 ROAD NETWORK MAJOR
 ROAD TYPE DISTRICT DISTRIBUTOR

LINK LAI KING HILL RD (from KWAI CHUNG INT SLIP RDS
 to KING CHO RD)



1. TRAFFIC FLOW VARIATION AND GROWTH



2. TRAFFIC CHARACTERISTICS (BY DIRECTION)

Parameter	All - Day	Mon. - Fri.	Sat.	Sun.
SOUTH BOUND				
A.A.D.T.	8300	8990	7370	6560
R 12 / 24 - %	67.8	69.8	62.1	60.4
R 16 / 24 - %	83.5	84.8	80	79.2
AM Peak Hour	0800-0900	0800-0900	0800-0900	0900-1000
One-way flow at AM peak hour	570	680	440	290
T - % (AM)	-	4.8	-	-
PM Peak Hour	1700-1800	1700-1800	1700-1800	1700-1800
One-way flow at PM peak hour	490	510	450	440
T - % (PM)	-	3.9	-	-
Prop.of commercial vehicles - 16 hr.	-	5.9	-	-
NORTH BOUND				
A.A.D.T.	8150	8880	7260	6170
R 12 / 24 - %	70.8	72.8	65.8	63.1
R 16 / 24 - %	87.6	88.8	84.8	82.8
AM Peak Hour	0800-0900	0800-0900	0800-0900	0900-1000
One-way flow at AM peak hour	540	640	400	280
T - % (AM)	-	2.9	-	-
PM Peak Hour	1800-1900	1700-1800	1800-1900	1800-1900
One-way flow at PM peak hour	500	550	470	440
T - % (PM)	-	8.5	-	-
Prop.of commercial vehicles - 16 hr.	-	6.6	-	-

3. OTHER INFORMATION AND COMMENT

4. Vehicle classification and occupancy - Monday to Friday

Time		Class of vehicle									
		Motor Cycle	Private Car	Taxi	Private LB	PLB	Goods veh.		Non Fr. Bus	Fr. Bus	
							Light	M & H		SD	DD
0700-0800	Pro	2.3	18.4	41.4	4.0	15.0	6.9	1.2	5.8	0.1	4.9
	Ocp	1.0	1.5	1.6	9.0	9.2	1.6	1.5	11.0	15.0	18.7
0800-0900 Peak hour	Pro	0.3	27.4	44.7	4.1	8.8	10.9	0.3	1.2	0.0	2.4
	Ocp	1.0	1.3	1.9	3.5	8.8	1.8	3.0	7.3	0.0	17.0
0900-1000	Pro	0.7	20.0	47.2	3.4	10.7	12.4	1.7	0.0	0.3	3.5
	Ocp	1.0	1.4	1.9	3.3	10.5	1.5	1.6	0.0	6.3	9.3
1000-1100	Pro	2.4	15.7	45.9	6.8	8.5	14.5	1.2	1.2	0.0	3.7
	Ocp	1.0	1.5	1.8	2.9	14.4	2.1	1.3	2.3	0.0	10.2
1100-1200	Pro	2.9	8.8	47.3	8.3	11.2	12.7	1.5	3.4	0.4	3.5
	Ocp	1.0	1.4	2.0	3.2	12.4	1.8	2.0	22.1	6.0	10.6
1200-1300	Pro	1.3	19.2	47.4	5.4	9.8	11.2	0.4	1.3	0.1	3.8
	Ocp	1.0	1.7	2.0	7.6	12.5	1.7	2.0	10.7	20.0	9.6
1300-1400	Pro	1.3	10.2	63.1	3.0	9.5	8.5	1.3	0.0	0.2	2.9
	Ocp	1.0	1.9	2.2	2.6	13.6	1.7	1.8	0.0	6.0	15.4
1400-1500	Pro	1.5	16.6	44.9	3.5	11.2	16.2	1.5	1.2	0.1	3.2
	Ocp	1.0	1.5	2.1	3.0	14.0	2.0	2.0	2.0	6.0	10.4
1500-1600	Pro	2.3	17.0	43.3	5.0	13.2	12.4	1.5	1.9	0.2	3.1
	Ocp	1.0	1.7	1.8	2.5	12.6	1.8	1.3	12.4	4.0	12.1
1600-1700	Pro	0.5	18.9	37.9	6.3	12.6	13.5	0.5	5.4	0.0	4.4
	Ocp	1.0	1.3	1.6	3.6	11.6	1.6	4.0	6.1	0.0	11.6
1700-1800	Pro	3.8	22.1	45.8	2.3	7.3	12.2	1.5	1.5	0.3	3.1
	Ocp	1.1	1.6	1.7	2.7	14.1	1.5	1.5	3.8	4.0	14.7
1800-1900	Pro	3.4	29.2	38.7	0.9	10.7	11.6	0.9	0.9	0.0	3.8
	Ocp	1.0	1.5	1.9	2.0	12.0	1.7	1.5	1.0	0.0	14.9
1900-2000	Pro	3.5	31.6	40.1	1.2	11.2	8.1	0.0	1.2	0.3	3.0
	Ocp	1.0	1.4	1.9	2.3	9.2	1.6	0.0	1.0	3.7	10.5
2000-2100	Pro	5.5	22.1	47.8	0.0	12.9	4.9	0.6	0.6	0.0	5.7
	Ocp	1.3	1.4	1.4	0.0	6.7	1.9	2.0	1.0	0.0	8.1
2100-2200	Pro	4.1	29.0	45.6	0.0	8.9	7.1	0.0	1.2	0.3	3.8
	Ocp	1.4	1.4	1.5	0.0	8.5	1.8	0.0	1.0	11.0	12.2
2200-2300	Pro	2.8	27.1	46.5	0.0	12.5	5.6	0.0	0.7	0.0	4.9
	Ocp	1.3	1.5	1.4	0.0	7.7	2.0	0.0	6.0	0.0	9.7
16 hours	Pro	2.2	20.6	45.8	3.5	10.7	10.9	0.9	1.6	0.1	3.6
	Ocp	1.1	1.5	1.8	3.8	11.2	1.7	1.7	8.4	6.8	12.2

Legend: Pro. Proportion of vehicles in % (Sum may not add up to 100% due to figure rounding)*

Ocp. Average occupancy of vehicles including both driver and passengers*

M&H Medium and Heavy

* All traffic data are collected from combined bounds